



This is a digital copy of a book that was preserved for generations on library shelves before it was carefully scanned by Google as part of a project to make the world's books discoverable online.

It has survived long enough for the copyright to expire and the book to enter the public domain. A public domain book is one that was never subject to copyright or whose legal copyright term has expired. Whether a book is in the public domain may vary country to country. Public domain books are our gateways to the past, representing a wealth of history, culture and knowledge that's often difficult to discover.

Marks, notations and other marginalia present in the original volume will appear in this file - a reminder of this book's long journey from the publisher to a library and finally to you.

### **Usage guidelines**

Google is proud to partner with libraries to digitize public domain materials and make them widely accessible. Public domain books belong to the public and we are merely their custodians. Nevertheless, this work is expensive, so in order to keep providing this resource, we have taken steps to prevent abuse by commercial parties, including placing technical restrictions on automated querying.

We also ask that you:

- + *Make non-commercial use of the files* We designed Google Book Search for use by individuals, and we request that you use these files for personal, non-commercial purposes.
- + *Refrain from automated querying* Do not send automated queries of any sort to Google's system: If you are conducting research on machine translation, optical character recognition or other areas where access to a large amount of text is helpful, please contact us. We encourage the use of public domain materials for these purposes and may be able to help.
- + *Maintain attribution* The Google "watermark" you see on each file is essential for informing people about this project and helping them find additional materials through Google Book Search. Please do not remove it.
- + *Keep it legal* Whatever your use, remember that you are responsible for ensuring that what you are doing is legal. Do not assume that just because we believe a book is in the public domain for users in the United States, that the work is also in the public domain for users in other countries. Whether a book is still in copyright varies from country to country, and we can't offer guidance on whether any specific use of any specific book is allowed. Please do not assume that a book's appearance in Google Book Search means it can be used in any manner anywhere in the world. Copyright infringement liability can be quite severe.

### **About Google Book Search**

Google's mission is to organize the world's information and to make it universally accessible and useful. Google Book Search helps readers discover the world's books while helping authors and publishers reach new audiences. You can search through the full text of this book on the web at <http://books.google.com/>

BG

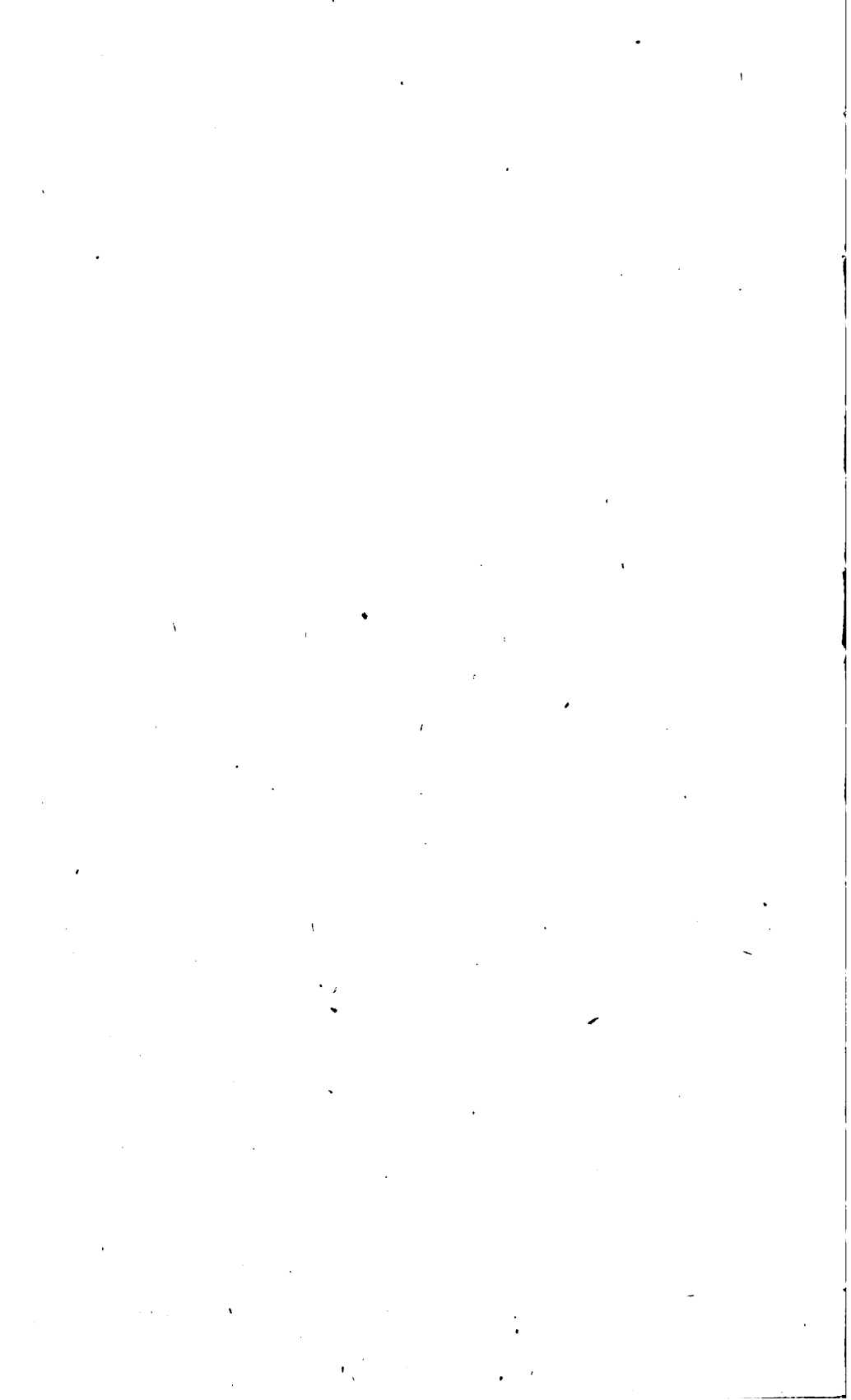
1200

HARVARD UNIVERSITY



LIBRARY OF THE  
MINERALOGICAL  
LABORATORY  
UNIVERSITY MUSEUM





DEPARTMENT OF THE INTERIOR  
UNITED STATES GEOLOGICAL SURVEY.

GEORGE OTIS SMITH, DIRECTOR

---

**BULLETIN 488**

---

**RESULTS OF SPIRIT LEVELING  
IN NEVADA**

1897 TO 1909, INCLUSIVE

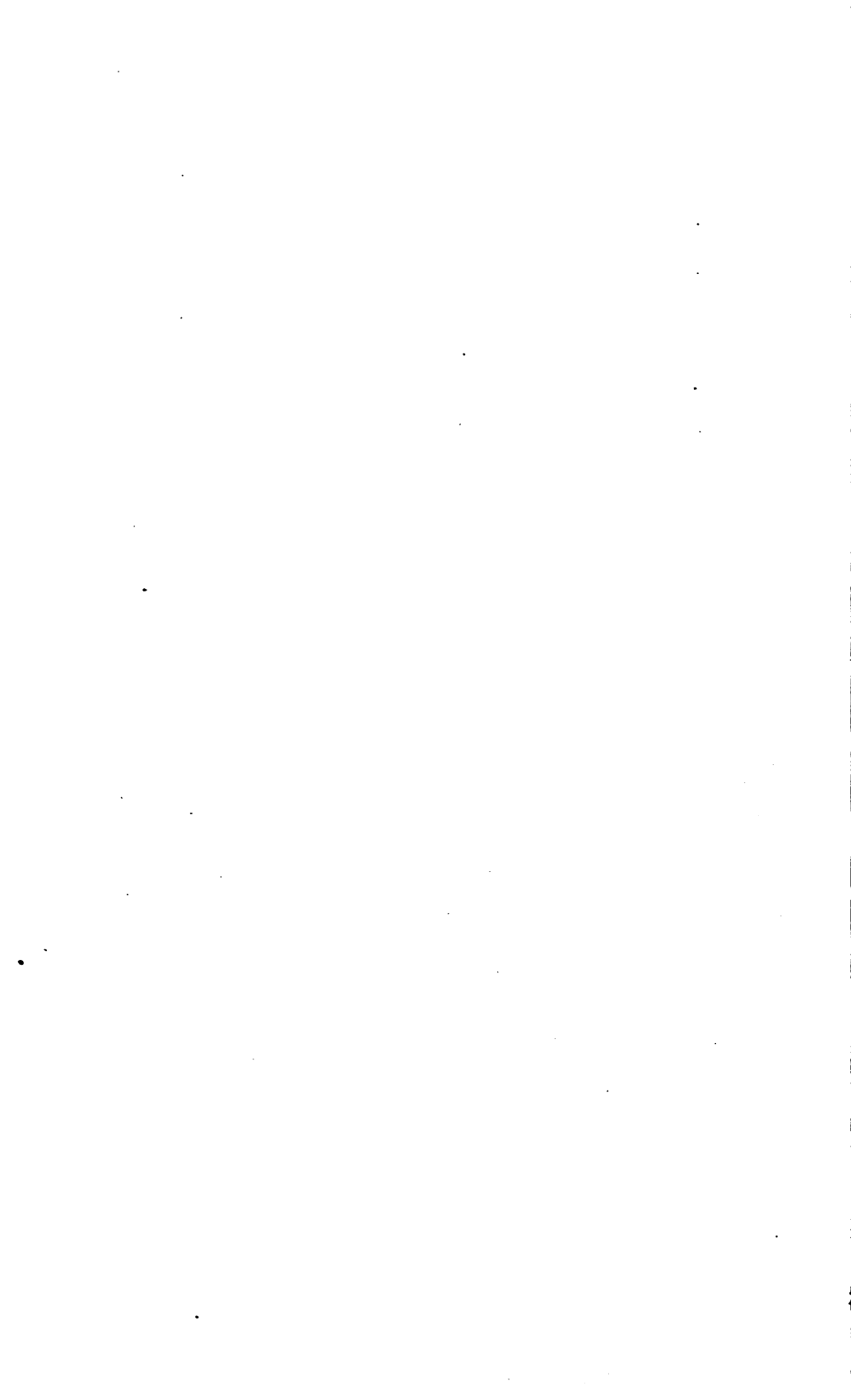
---

R. B. MARSHALL, CHIEF GEOGRAPHER



WASHINGTON  
GOVERNMENT PRINTING OFFICE

1911



## CONTENTS.

---

	Page.
Introduction.....	5
Scope of work.....	5
Personnel.....	5
Classification.....	5
Bench marks.....	6
Datum.....	6
Topographic maps.....	7
Precise leveling.....	7
Lida 1° quadrangle (Esmeralda County).....	7
Primary leveling.....	8
Furnace Creek, Kawich, Las Vegas, and Lida 1° quadrangles; Silver Peak and White Mountain 30' quadrangles (Esmeralda, Lincoln, and Nye counties).....	8
Camp Mohave and Ivanpah 1° quadrangles (Lincoln County).....	15
Tonopah 1° quadrangle (Esmeralda and Nye counties).....	17
Bridgeport 30' and Hawthorne 1° quadrangles (Esmeralda County).....	20
Carson Sink and Hawthorne 1° quadrangles (Esmeralda, Churchill, and Nye counties).....	22
Ely special quadrangle (White Pine County).....	26
Index.....	27

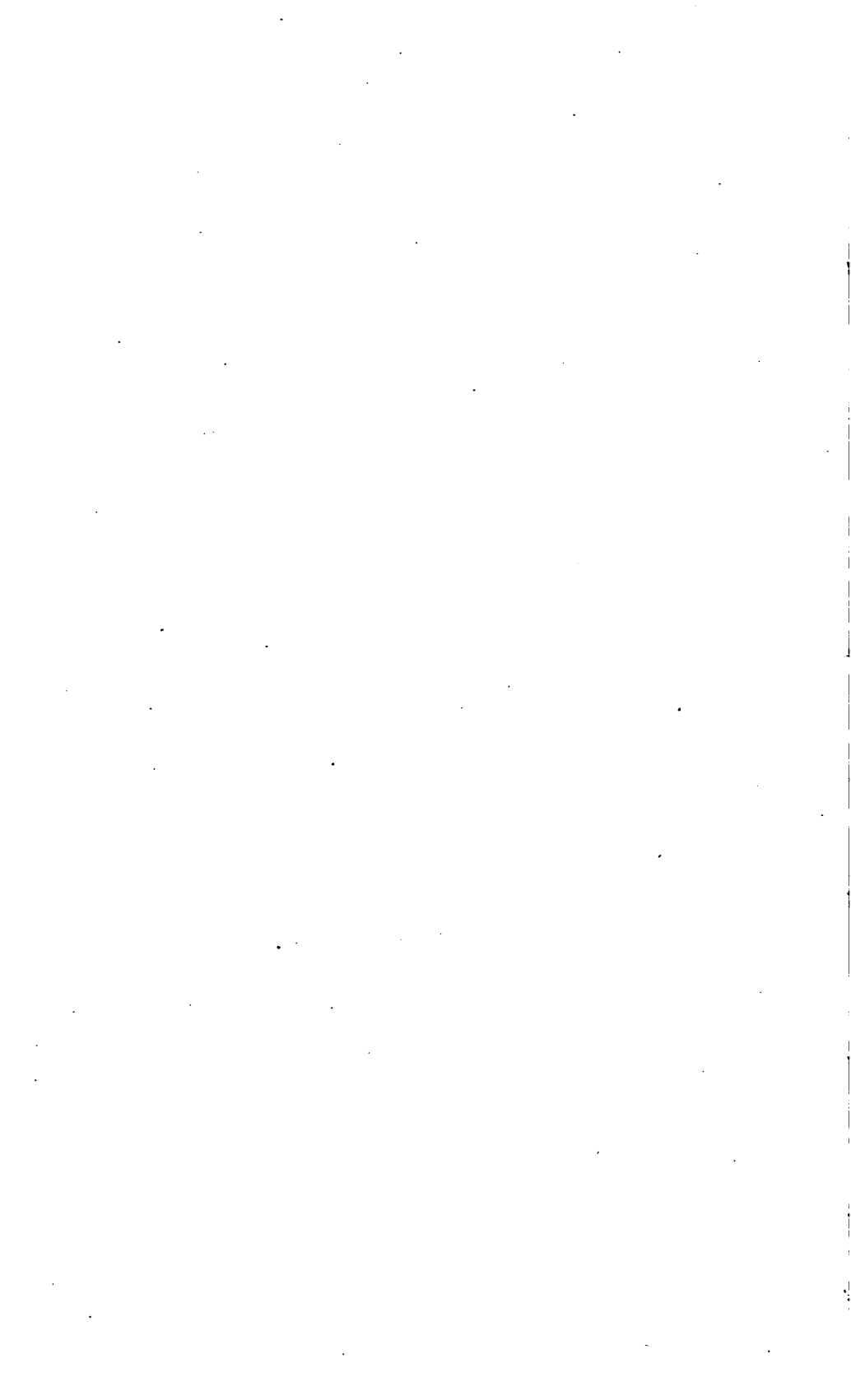
## ILLUSTRATION.

---

	Page.
PLATE I. Geological Survey bench marks.....	5

3









## GEOLOGICAL SURVEY BENCH MARKS.

*A*, Tablet used in cooperating States. The State name is inserted at *G*.  
*B* and *D*, Copper temporary bench mark, consisting of a nail and copper washer.  
*A*, *C*, and *E*, Tablets for stone or concrete structures.  
*F*, Iron post used where there is no rock.

# RESULTS OF SPIRIT LEVELING IN NEVADA, 1897 TO 1909, INCLUSIVE.

---

R. B. MARSHALL, Chief Geographer.

---

## INTRODUCTION.

*Scope of the work.*—All results of spirit leveling in Nevada previously published by the United States Geological Survey and all the results of later work are included in this report, rearranged by quadrangles. The elevations are based on preliminary heights of bench marks along the precise level line of the Coast and Geodetic Survey from San Diego via Barstow and Goffs, Cal., to Ogden, Utah, and on the precise line of the United States Geological Survey from Mohave, Cal., to Lida, Nev.

*Personnel.*—The field work previous to 1903 was done under the general direction of R. U. Goode, geographer; that for 1903 to 1906, inclusive, under E. M. Douglas, geographer; that for 1907 under R. B. Marshall, geographer; and the later work under T. G. Gerdine, geographer, under the general direction of R. B. Marshall, chief geographer. The names of the various levelmen are given in the introduction to each list. The office work of computation, adjustment, and preparation of lists was done mainly by S. S. Gannett, geographer, and D. H. Baldwin, topographer, and since 1907 under the general direction of E. M. Douglas, geographer.

*Classification.*—The elevations are classified as precise or primary according to the methods employed in their determination. For precise level lines instruments and rods of the highest grade are used, each line is run both forward and backward, and every precaution is taken to guard against error. The allowable divergence between the forward and the backward lines in feet is represented by the formula  $0.017 \sqrt{D}$ , in which  $D$  is the distance in miles between bench marks. For primary lines standard Y levels are used; lines are run in circuits or are closed on precise lines, with an allowable closing error in feet represented by  $0.05 \sqrt{D}$ , in which  $D$  is the length of the circuit in miles, sufficient care being given to the work to maintain this

standard. For levels of both classes careful office adjustments are made, the small outstanding errors being distributed over the lines.

*Bench marks.*—The standard bench marks are of two forms. The first form is a circular bronze or aluminum tablet (*C* and *E*, Pl. I),  $3\frac{1}{2}$  inches in diameter and one-quarter inch thick, having a 3-inch stem, which is cemented in a drill hole in solid rock in the wall of some public building, a bridge abutment, or other substantial masonry structure. The second form (*F*, Pl. I), used where masonry or rock is not available, consists of a hollow wrought-iron post  $3\frac{1}{2}$  inches in outer diameter and 4 feet in length. The bottom is spread out to a width of 10 inches in order to give a firm bearing on the earth. A bronze or aluminum-bronze cap is riveted over the top of the post, which is set about 3 feet in the ground. A third style of bench mark with abbreviated lettering (*B* and *D*, Pl. I) is used for unimportant points. This consists of a special copper nail  $1\frac{1}{2}$  inches in length driven through a copper washer seven-eighths inch in diameter. The tablets as well as the caps on the iron posts are appropriately lettered, and where States have cooperated in the work the fact of such cooperation is indicated by the addition of the State name (*G*, Pl. I).

The numbers stamped on the bench marks described in the following pages represent the elevations to the nearest foot as determined by the levelman. These numbers are stamped with  $\frac{3}{16}$ -inch steel dies on the tablets or post caps to the left of the word "FEET." The office adjustment of the notes and the reduction to mean sea level datum may so change some of the figures that the original markings are 1 or 2 feet in error. It is assumed that engineers and others who have occasion to use the bench-mark elevations will apply to the Director of the United States Geological Survey, at Washington, D. C., for the adjusted values, and will use the markings as identifications numbers only.

*Datum.*—All United States Geological Survey elevations are referred to mean sea level, which is the level that the sea would assume if the influence of winds and tides were eliminated. This level is not the elevation determined from the mean of the highest and the lowest tides, nor is it the half sum of the mean of all the high tides and the mean of all the low tides, which is called the half-tide level. *Mean sea level is the average height of the water, all stages of the tide being considered.* It is determined from observations made by means of tidal gages placed at stations where local conditions, such as long, narrow bays, rivers, and like features, will not affect the height of the water. To obtain even approximately correct results these observations must extend over at least one lunar month, and if accuracy is desired they must extend over several years. At ocean stations the half-tide level and the mean sea level usually differ but little. It is

assumed that there is no difference between the mean sea level as determined from observations in the Atlantic Ocean, the Gulf of Mexico, or the Pacific Ocean.

The connection with tidal stations for bench marks in certain areas that lie at some distance from the seacoast is still uncertain, and this fact is indicated by the addition of a letter or word to the right of the word "DATUM" on tablets or posts. For such areas corrections for published results will be made from time to time as the precise-level lines of the United States Geological Survey or other Government organizations are extended.

*Topographic maps.*—Maps of the following quadrangles wholly or partly in Nevada have been published by the United States Geological Survey up to July 1, 1911. Maps now in stock may be obtained for 5 cents each or \$3 a hundred on application to the Director of the Survey at Washington, D. C.:

* Amargosa region (Nev.-Cal.). <sup>1</sup>	Lida (Nev.-Cal.). <sup>1</sup>
Ballarat (Cal.-Nev.). <sup>1</sup>	Long Valley.
Bullfrog special.	Markleeville (Cal.-Nev.).
Camp Mohave (Ariz.-Nev.-Cal.).	Paradise.
Carson. <sup>2</sup>	Pioche (Nev.-Utah).
Carson Sink.	Reno.
Disaster.	St. Thomas (Nev.-Ariz.).
Ely special.	Silver Peak (Nev.-Cal.).
Furnace Creek (Cal.-Nev.). <sup>1</sup>	Tonopah.
Goldfield special.	Tonopah mining.
Granite Range.	Wabuska.
Kawich.	Wadsworth .
* Lake Tahoe and vicinity (Cal.-Nev.). <sup>2</sup>	Wellington (Cal.-Nev.).
Las Vegas (Nev.-Cal.).	

## PRECISE LEVELING.

### Lida 1° Quadrangle.

#### ESMERALDA COUNTY.

The elevations in the following list are a portion of the results of a spur line of precise levels run in the spring of 1905 by R. A. Farmer, and extend from the State line near Oasis east to Lida. For the results obtained in the continuation of this line, see Bulletin 342, "Results of Spirit Leveling in California."

The initial bench mark is an iron post stamped "2732 B," 0.4 mile south of Mohave and 25 feet north of milepost 382, the elevation of which is now accepted as 2,733.451 feet above mean sea level.

\* Out of print.

<sup>1</sup> Amargosa region map includes Kawich sheet and parts of Ballarat, Furnace Creek, and Lida sheets.

<sup>2</sup> Lake Tahoe and vicinity map includes Carson, Markleeville, Pyramid Peak, and Truckee sheets.

## LIDA 1' QUADRANGLE.

State line east along road to Lida.

Forks of road to Oasis, 6 miles east of, 0.2 mile south of lone yucca tree, 30 feet north of road to Goldfield; iron post stamped "B F 1905 12 5306" .	Feet. 5, 306. 117
Forks of road to Oasis, 7 miles east of, near west end of Palmetto Canyon, 60 feet south of road to Goldfield, on highest point of rock 2 by 3 by 4 feet; chiseled circle; rock painted "U. S. G. S. B. M. 33" .	5, 412. 82
Palmetto, 6 miles west of, 100 feet north of Goldfield road, on highest point of 4 by 3 by 1 foot rock; hub; large bowlder 10 feet north painted "U. S. G. S. B. M. 34" .	5, 536. 89
Palmetto, 3 miles west of, 5 feet north of Goldfield road, at foot of rocky cliff, in mass of scaly rock; tablet stamped " B F 1905 13 5884" .	5, 883. 809
Palmetto, opposite saloon; iron post stamped "B F 1905 14 6168" .	6, 168. 197
Palmetto, 2 miles east of, 0.5 mile north of deserted mill, 40 feet south of Goldfield road, on highest point of rock 12 by 8 by 6 inches; hub. . . . .	6, 345. 40
Indian Springs, 1.2 miles west of, 30 feet north of Goldfield road, 100 feet west of point where road curves around spur of hill; iron post stamped "B F 1905 15 6624" .	6, 623. 911
Summit between Lida and Indian Springs, 10 feet north of Goldfield road; iron post stamped "B F 1905 16 7409" .	7, 408. 673
Lida, 3 miles west of, 30 feet north of Goldfield road; iron post stamped "B F 1905 17 6869" .	6, 869. 386
Lida, 1 mile west of, 50 feet north of Goldfield road, on highest point of rock 4 by 2 by 1 foot; hub; rock painted "U. S. B. M. 47" and marked by rock monument . . . . .	6, 392. 06
Lida, west end of Main Street, 30 feet east of well; iron post stamped "B F 1905 18 6189" .	6, 188. 965

## PRIMARY LEVELING.

Furnace Creek, Kawich, Las Vegas, and Lida 1°, Silver Peak and White Mountain 30' Quadrangles.

## ESMERALDA, LINCOLN, AND NYE COUNTIES.

The elevations in the following list are based upon an elevation at Lida determined by precise leveling of the United States Geological Survey from Mohave, upon an elevation at Las Vegas determined in 1907 by the Coast and Geodetic Survey by precise leveling of 1906-7 from San Diego, Cal., and upon primary prism level lines in California from same sources.

The leveling in part of the Lida quadrangle and in the White Mountain quadrangle was done in 1897-98 by C. R. Smith and is republished from the appendix to the Nineteenth Annual Report of the Survey. These results, which were originally based on railroad datum, have been reduced 74.8 feet. Additional leveling was done in the Lida quadrangle in 1905 and 1907 by Homer Hadley and L. F. Biggs, respectively. The leveling in the Furnace Creek quadrangle was done by Ress Philips in 1905 and by Biggs in 1907, and that in the Kawich quadrangle by Philips in the same year. The leveling in the Las Vegas quadrangle was done by Biggs in 1907.

**LAS VEGAS 1' QUADRANGLE.**

**Point 14.4 miles east of Amargosa east and southeast along Las Vegas & Tonopah Railroad to Las Vegas.**

	Feet.
Amargosa, 14.4 miles east of, 10 feet north of milepost 60; iron post stamped "3628 B 1907".....	3, 627. 778
Amargosa, 18.4 miles east of, 12 miles west of Indian Springs, 10 feet north of milepost 56; iron post stamped "3576 B 1907".....	3, 575. 635
Indian Springs, 8 miles west of, 10 feet north of milepost 52; iron post stamped "3431 B 1907".....	3, 430. 212
Indian Springs, 4 miles west of, 10 feet north of milepost 48; iron post stamped "3279 B 1907".....	3, 278. 613
Indian Springs, 0.2 mile west of, 10 feet north of milepost 44; iron post stamped "3135 B 1907".....	3, 134. 888
Indian Springs, 3.5 miles east of, 10 feet north of milepost 40; iron post stamped "3148 B 1907".....	3, 146. 644
Indian Springs, 7.5 miles east of, 10 feet north of milepost 36; iron post stamped "3084 B 1907".....	3, 073. 230
Indian Springs, 11.5 miles east of, 10 feet north of milepost 32; iron post stamped 3062 B 1907".....	3, 060. 704
Indian Springs, 15.5 miles east of, 10 feet north of milepost 28; iron post stamped "3029 B 1907".....	3, 027. 916
Corn Creek, 0.6 mile west of, 10 feet north of milepost 24; iron post stamped "2876 B 1907".....	2, 874. 570
Corn Creek, 3.4 miles east of, 10 feet north of milepost 20; iron post stamped "2779 B 1907".....	2, 777. 900
Corn Creek, 7.4 miles southeast of, 10 feet north of milepost 16; iron post stamped "2645 B 1907".....	2, 643. 696
Las Vegas, 12 miles north of, 10 feet north of milepost 12; iron post stamped "2454 B 1907".....	2, 452. 156
Las Vegas, 8 miles north of, 40 feet south of milepost 8; iron post stamped "2294 B 1907".....	2, 292. 197
Las Vegas, 4 miles north of, 10 feet north of milepost 4; iron post stamped "2139 B 1907".....	2, 137. 728
Las Vegas, 1 mile west of, 200 feet south of junction of Las Vegas & Tonopah Railroad and San Pedro, Los Angeles & Salt Lake Railroad, in base of telegraph pole; spike.....	2, 034. 74
Las Vegas, in front of station; top of rail.....	2, 029. 9
Las Vegas, 200 feet west of station; iron post stamped "2033 B 1907" (Coast and Geodetic Survey preliminary 1911 adjustment elevation adopted)...	2, 030, 832
Las Vegas, southwest corner of bank building, in side wall at foot of column; aluminum tablet stamped "2024 B 1907" (Coast and Geodetic Survey preliminary 1911 adjustment elevation adopted).....	2, 021. 885

**Las Vegas southwest along San Pedro, Los Angeles & Salt Lake Railroad 20.4 miles, thence west along road to Stump Springs and northwest to Pahrump.**

Las Vegas, 4.4 miles southwest of, 10 feet south of milepost 330; iron post stamped "2136 B 1907".....	2, 133. 863
Las Vegas, 8.4 miles southwest of, 400 feet northeast of milepost 326; iron post stamped "2336 B 1907".....	2, 334. 093
Arden, in front of station; top of rail.....	2, 425. 8
Las Vegas, 12.3 miles southwest of, 20 feet south of road; iron post stamped "2631 B 1907".....	2, 629. 389
Las Vegas, 16.9 miles southwest of, 20 feet north of road; iron post stamped "3036 B 1907".....	3, 034. 198



Las Vegas, 20.4 miles southwest of, 10 feet south of road, in bowlder; aluminum tablet stamped "3493 B 1907" .....	Feet. 3, 490. 942
Mountain Spring, 4.2 miles east of, 20 feet south of road, in bowlder; aluminum tablet stamped "4557 B 1907" .....	4, 555. 516
Mountain Spring, 0.5 mile south of, 20 feet south of road; iron post stamped "5504 B 1907" .....	5, 501. 733
Mountain Spring, 4.3 miles west of, 10 feet north of road, in bowlder; aluminum tablet stamped "4556 B 1907" .....	4, 554. 294
Mountain Spring, 8.1 miles west of, 10 feet north of road, in bowlder; aluminum tablet stamped "3909 B 1907" .....	3, 907. 704
Stump Springs, 5 miles east of, at junction of roads; iron post stamped "3162 B 1907" .....	3, 160. 357
Stump Springs, 200 feet south of, at junction of roads; iron post stamped "2809 B 1907" .....	2, 806. 491
Stump Springs, 6.2 miles west of, 8 miles southeast of Manse, 20 feet north of road; iron post stamped "2929 B 1907" .....	2, 927. 255
Manse, 40 feet south of post office, in front of ranch house; iron post stamped "2776 B 1907" .....	2, 774. 144
Pahrump, 20 feet north of hotel; iron post stamped "2668 B 1907" .....	2, 666. 053

**Las Vegas south 15 miles along road to Searchlight. (Part of circuit to Barnwell, Cal.)**

Las Vegas, 3.7 miles south of, 50 feet west of spring, in base of mesquite; nail with aluminum tag stamped "1793" .....	1, 790. 80
Las Vegas, 7.2 miles south of, 25 feet west of road, in base of mesquite; spike with aluminum tag stamped "1677" .....	1, 674. 97
Mesquite Spring, 25 feet east of pump, in base of mesquite; spike with aluminum tag stamped "1621" .....	1, 619. 10
Mesquite Spring, 25 feet north of pump, in base of mesquite tree; spike with aluminum tag stamped "1621" .....	1, 619. 08
Mesquite Spring, 25 feet north of pump, in lava rock buried flush with ground; aluminum tablet stamped "1621 B 1909 1" .....	1, 619. 014
Mesquite Spring, 3.9 miles south of, 20 feet east of road, 300 feet north of road junction to Camp Fred Ellen, in bowlder, marked by rock cairn; aluminum tablet stamped "1746 B 1909 2" .....	1, 743. 438

**FURNACE CREEK 1° QUADRANGLE.**

**Pahrump northwest along road to point on State line west of Kings Spring.**

Pahrump, 5.8 miles west of, 600 feet north of Sixmile Spring, west point of rock hill at entrance of cave, in ledge; aluminum tablet stamped "2566 B 1907" .....	2, 564. 587
Kings Spring, 6.6 miles east of, 20 feet south of road, in ledge; aluminum tablet stamped "2503 B 1907" .....	2, 502. 396
Kings Spring, 150 feet north of, in ledge; aluminum tablet stamped "2315 B 1907" .....	2, 314. 444
Kings Spring, 4.4 miles west of, at junction of roads; iron post stamped "2172 B 1907" .....	2, 172. 585

**Kings Spring north toward Amargosa.**

Amargosa, 12.3 miles south of, 200 feet north of road, in ledge; aluminum tablet stamped "2488 B 1907" .....	2, 487. 859
Amargosa, 8 miles south of, in bed of dry lake, 40 feet north of road; iron post stamped "2331 B 1907" .....	2, 330. 187

**Point on State line near Daylight Springs, Cal., northeast along road to Bullfrog.**

	Feet.
Bullfrog, 4.6 miles south of, 20 feet east of road; iron post stamped "3560 B 1907".....	3, 569. 986
Bullfrog, 1.5 miles south of, 20 feet east of road; iron post stamped "3472 B 1907".....	3, 481. 685
Bullfrog, southeast corner of Senator Stewart's land office; iron post stamped "3575 100".....	3, 571. 234

**Bullfrog southeast along Las Vegas & Tonopah Railroad via Amargosa to point 14.4 miles east of Amargosa.**

Bullfrog, 4.6 miles southeast of, 1,000 feet southeast of South Bullfrog saloon, at junction of road; iron post stamped "3139 B 1907".....	3, 138. 892
Bullfrog, 7.6 miles southeast of, 20 feet north of milepost 113; iron post stamped "3002 B 1907".....	3, 002. 332
Bullfrog, 10.6 miles southeast of, 10 feet north of milepost 110; iron post stamped "2865 B 1907".....	2, 865. 208
Bullfrog, 13.6 miles southeast of, 10 feet north of milepost 107; iron post stamped "2755 B 1907".....	2, 754. 730
Bullfrog, 16.6 miles southeast of, 10 feet north of milepost 104; iron post stamped "2664 B 1907".....	2, 664. 170
Roses Wells, 1 mile northwest of, 10 feet north of milepost 101; iron post stamped "2575 B 1907".....	2, 575. 595
Roses Wells, 2 miles southeast of, 10 feet northeast of milepost 98; iron post stamped "2587 B 1907".....	2, 586. 895
Roses Wells, 5 miles southeast of, 10 feet north of milepost 95; iron post stamped "2582 B 1907".....	2, 582. 655
Roses Wells, 8 miles southeast of, 10 feet north of milepost 92; iron post stamped "2648 B 1907".....	2, 647. 790
Roses Wells, 12 miles southeast of, 10 feet east of milepost 88; iron post stamped "2658 B 1907".....	2, 658. 462
Amargosa, 9.6 miles west of, 210 feet north of milepost 84; iron post stamped "2843 B 1907".....	2, 843. 613
Amargosa, 5.6 miles west of, 10 feet north of milepost 80; iron post stamped "2762 B 1907".....	2, 761. 073
Amargosa, 1.6 miles west of, 10 feet north of milepost 76; iron post stamped "2765 B 1907".....	2, 765. 263
Amargosa, 700 feet east of station, foundation of water tank; point on southwest corner.....	2, 776. 112
Amargosa, 2.4 miles east of, 10 feet north of milepost 72; iron post stamped "2840 B 1907".....	2, 839. 557
Amargosa, 6.4 miles east of, 10 feet north of milepost 68; iron post stamped "3034 B 1907".....	3, 033. 352
Amargosa, 10.4 miles east of, 10 feet north of milepost 64; iron post stamped "3320 B 1907".....	3, 319. 275
Amargosa, 14.4 miles east of, 10 feet north of milepost 60; iron post-stamped "3628 B 1907".....	3, 627. 778

**Point 2.2 miles northwest of Currie Well (Mud Springs) southeast to Bullfrog.**

Mud Springs, 2.2 miles north of, 30 feet east of road, on south side of deep ravine; iron post stamped "25".....	4, 394. 299
Mud Springs, at stage station, 3 feet north of northeast corner of office; iron post stamped "26".....	4, 401. 299
Mud Springs, 3 miles south of, on summit, 50 feet east of road, 12 feet south of telephone pole; iron post stamped "27".....	4, 640. 530
Original, 0.5 mile southeast of, at forks of roads on small ridge between two ravines; iron post stamped "28".....	3, 850. 413

**Bullfrog southeast 1.6 miles, thence northeast to Beatty.**

Beatty, 1.5 miles west of, 800 feet east of Beatty and Bullfrog and Beatty and Rhyolite roads, 15 feet south of road, in bowlder; aluminum tablet stamped "30".....	Feet. 3, 546. 340
Beatty, in ravine, 100 feet south of principal street, 500 feet north of Beatty Ice & Manufacturing Co. plant, in ledge; aluminum tablet stamped "31".....	3, 309. 204
<b>Road fork west of Beatty west via Montgomery-Shoshone Mine and Rhyolite to Bullfrog.</b>	
Montgomery-Shoshone Mine, 100 feet north of boarding house, on summit, 200 feet south of road, in bowlder; aluminum tablet stamped "32".....	4, 035. 612
Rhyolite, under high black ledge, at foot of dump of Bullfrog Mining Co. tunnel, 30 feet south of bottom of wash; aluminum tablet stamped "33".....	3, 679. 730
<b>Road forks 1.8 miles west of Bullfrog north to Goldbar, thence southwest to point 3.3 miles west of Bullfrog.</b>	
Goldbar, 2 miles east of, on summit 1 mile west of Buck Springs, 1.5 miles north of Original, 20 feet south of Goldbar road; iron post stamped "34 114".....	4, 480. 198

**KAWICH 1° QUADRANGLE.****Point near Seattle Well to point 3.3 miles north of Mud Springs.**

Seattle Well, 5 miles south of, 30 feet south of large yucca stump, 10 feet east of road; iron post stamped "23".....	4, 339. 394
Mud Springs, 5 miles north of, at fork of Bullfrog road on south side of small ravine; iron post stamped "24".....	4, 456. 272

**SILVER PEAK 30' QUADRANGLE (LIDA 1° QUADRANGLE).****Point 13.5 miles southeast of Columbus southeast to Silver Peak.**

Columbus, 13.5 miles southeast of, 20 feet right of road on summit in sandstone outcrop; bronze tablet stamped "5208".....	5, 133. 265
Columbus, 15.5 miles southeast of; top of iron post of Salt Well guideboard.....	4, 935. 29
Columbus, 19 miles southeast of, top of iron post of Dry Well guideboard.....	4, 838. 88
Columbus, 25.5 miles southeast of, at junction with Reese River road; iron post stamped "4996".....	4, 920. 969
Silver Peak, west end of town, in stone front of Chialdavitch store; bronze tablet stamped "4382".....	4, 307. 507

**Silver Peak south to Barrel Springs and return.**

Silver Peak, 0.5 mile south of; top of iron post of Palmetto guideboard.....	4, 297. 55
Silver Peak, 9.5 miles south of, at junction of road from Indian Garden; iron post stamped "4803".....	4, 728. 091
Barrel Springs, at right of mouth of tunnel; iron post stamped "6177".....	6, 102. 572

**Silver Peak west along Summit road to Fish Lake road, thence north along latter via The Crossing to Gap Springs.**

Coyote Spring; iron post stamped "6041".....	5, 966. 550
Silver Peak, 6.2 miles northwest of; top of iron post of Silver Peak mine guideboard.....	6, 634. 59
Silver Peak, 7 miles northwest of, on summit 50 feet south of road; iron post stamped "7353".....	7, 278. 193
Cave Springs, in front of right wall of cave; bronze tablet stamped "6248".....	6, 172. 749
The Crossing, on Mineral Monument Hill; iron post stamped "4825".....	4, 750. 547
Gap Springs, 10 miles south of Columbus, 100 feet south of spring; iron post stamped "4744".....	4, 669. 110

**The Crossing northeast via Emigrant Pass to Columbus road.**

	Feet.
Benders Pass; iron post stamped "6145" .....	6,069.516
The Crossing, 13 miles west of, at junction with Columbus road; top of iron post of guideboard marked "Fish Lake Valley 13 miles" .....	4,961.47

**Dry Well northeast via Salt Well to Reese River road, thence south along latter to Silver Peak road.**

Salt Well; iron post stamped "4869" .....	4,795.158
Big Smoky Valley, southeast side of, on Reese River road, 7.5 miles north of its junction with Silver Peak road; iron post stamped "4841" .....	4,767.191

**Dry Well south to northwest corner of T. 1 S., R. 38 E. (single spur line).**

T. 1 S., R. 38 E., northwest corner of; iron post stamped "5606" .....	5,531.255
--	-----------

**Point near The Monocline northeast to northwest corner of T. 1 S., R. 40 E. (single spur line).**

T. 1 S., R. 40 E., northwest corner of; iron post stamped "5453" .....	5,377.834
--	-----------

**Point near The Monocline southeast across country to southeast corner of sec. 8, T. 2 S., R. 40 E., thence west to Silver Peak.**

T. 2 S., R. 40 E., southeast corner of sec. 8; iron post stamped "4346" .....	4,271.667
---	-----------

**Fork west of Coyote Creek northeast to Blair mine and return.**

Blair mine, on Mineral Ridge, 1 mile north of Tarantula Springs, on summit of trail running from Valcadis's building; iron post stamped "7298" .....	7,222.817
--	-----------

**Point on Piper road at northwest corner of T. 4 S., R. 39 E. west via Cow Camp Springs to southeast corner of sec. 31, T. 3 S., R. 38 E. and return.**

T. 4 S., R. 39 E., northwest corner of; iron post stamped "4661" .....	4,586.253
T. 3 S., R. 38 E., south corner of secs. 31 and 32; iron post stamped "5979" ..	5,903.825

**LIDA 1° QUADRANGLE (EAST HALF).****Lida south via Stewart Mill to California-Nevada State line.**

Tule Spring, 300 feet south of saloon, at junction of roads, in large boulder; tablet stamped "5607 B 1907 B" .....	5,608.447
Sand Spring, 4 miles north of, 200 feet east of road, at State line monument 82; top of post .....	3,741.714

**Lida east along road to fork east of county line, thence southeast to Seattle Well.**

Lida, 1 mile east of, 100 feet north of creek, west end of canyon, 30 feet north of road, at foot of bluff, in limestone; aluminum tablet stamped "9" .....	6,036.545
Eagle City, 300 feet north of well, 125 feet north of road, in limestone ledge; aluminum tablet stamped "8" .....	5,705.922
Eagle City, 1.8 miles east of, 10 feet south of junction of Bullfrog-Lida roads, in large boulder; aluminum tablet stamped "7" .....	5,402.805
Eagle City, 4.8 miles east of, 12 feet north of road, on south side of Mount Jackson, at point where road makes sharp turn to left toward opposite side of valley, on small ridge; iron post stamped "10" .....	5,031.745
Eagle City, 6.8 miles east of, opposite mouth of canyon, east side of Mount Jackson, at intersection of Gold Mountain trail with road, 15 feet north of road; iron post stamped "11" .....	4,887.619
Eagle City, 10.8 miles east of, 20 feet east of road, 300 yards east of small knoll with large boulders on top, above wagon road; iron post stamped "12" .....	4,774.380

	Feet.
Eagle City, 13.8 miles southeast of, 20 feet east of small ravine, 10 feet north of road; iron post stamped "13 4771" .....	4, 771. 660
Eagle City, 16.8 miles southeast of, 10 feet north of road, 50 feet west of small deep ravine, 300 feet north of large yucca tree in bottom of ravine; iron post stamped "14" .....	4, 738. 904
Eagle City, 19 miles southeast of, on summit of junction of Lida and Bullfrog road with Goldfield and Bullfrog stage road, 50 feet east of road, on ledge; aluminum tablet stamped "15" .....	4, 693. 730
Goldfield & Tonopah Lumber Co. station, 2 miles north of, 8 feet east of summit; iron post stamped "16" .....	4, 348. 622
Greens Well, 200 feet north of, at forks of road to Thorp's mill; iron post stamped "17" .....	4, 131. 944
Montana, stage station, 2 miles north of, 15 feet west of road; iron post stamped "18" .....	4, 025. 874
Summerville, stage station, 150 feet north of well, at forks of road to Thorp's mill; iron post stamped "19" .....	3, 953. 834
Summerville, 3.2 miles south of, near south end of barren alkali flat; iron post stamped "20" .....	3, 945. 334
Summerville, 6.2 miles south of, 40 feet east of road, on edge of low ridge running parallel with road; iron post stamped "21" .....	3, 950. 221
Seattle Well, 1.2 miles south of, 20 feet east of road; iron post stamped "22" ..	4, 048. 496

**Road junction east of Eagle City northeast to Goldfield.**

Wilsons Well, 4.7 miles south of, 12 feet west of road, 0.5 mile northwest of foot of Jackson Mountain, where dim road leads to east; iron post stamped "6" .....	5, 198. 436
Wilsons Well, 1 mile south of, 25 feet east of road; iron post stamped "5" ..	5, 217. 427
Halfway station, 3.2 miles south of, 210 feet east of road, on south edge of small wash, in boulder; aluminum tablet stamped "4" .....	5, 334. 612
Halfway station, 250 feet south of, 30 feet west of road; iron post stamped "3" .....	5, 559. 418
Goldfield, 8.2 miles south of, 12 feet west of road, in edge of rock slide at foot of high bluff, 300 feet east of a rock ledge which is 100 feet in diameter and stands in valley, in boulder; aluminum tablet stamped "2" .....	5, 671. 710
Goldfield, 5 miles south of, 100 feet east of wagon road, 200 yards north of point where wagon road intersects automobile road, 30 feet west of wash, in boulder 3 by 3 by 2 feet; aluminum tablet stamped "1" .....	5, 524. 598
Goldfield, 1.8 miles southeast of, on first summit crossed by Goldfield-Lida road, 50 feet south of road, 10 feet northwest of telegraph pole; iron post stamped "B 1905 0 H" .....	6, 088. 891
Goldfield, at southeast corner of Crook Avenue and alley between Main and Columbia streets, in 6-foot stone post set 3 feet in ground; aluminum tablet stamped "B 1905 1 H" .....	5, 683. 841

**Goldfield to Diamondfield and return.**

Goldfield, 2.4 miles north of, along Tonopah road, 75 feet east of road, in boulder; aluminum tablet stamped "5493 B 1905 H" .....	5, 492. 032
Diamondfield, 2 feet east of northeast corner of post office; iron post stamped "B 1905 3 H" .....	5, 646. 691
Diamondfield, No. 2 Daisy Bell mine, 160 feet south of southwest corner claim post, in highest surface of malpais rock; aluminum tablet stamped "B 1905 4 H" .....	6, 014. 663
Diamondfield, Loc Non Connaugh Lass mine, 200 feet west of claim post, on top of low ridge, in boulder; aluminum tablet stamped "1905 H 5" ..	5, 815. 180

**Point 1.8 miles south of Goldfield along south edge of malpais bluff, thence north to Goldfield ice factory and Goldfield.**

Goldfield, 1.8 miles south of, on west side of first large draw west of Goldfield-Lida trail, near mass of malpais rock, in boulder; aluminum tablet stamped "1905 H 6" .....	Feet. 6, 277. 111
Goldfield, 1.7 miles northwest of, 50 feet south of road to city dump; iron post stamped "H 7 1905" .....	5, 755. 083
Goldfield, 1.2 miles northwest of, 1,000 feet north of station, opposite transit station 1455, 100 feet west of center line of railroad; paint point on cropping boulder marked "U. S. B. M." (Railroad elevation 5,701.04 feet) .....	5, 646. 72

**Goldfield north along Tonopah stage road to point near Gold Mountain Mining Co.'s plant.**

Goldfield, 4.7 miles north of, 20 feet east of road, 400 feet east of telephone line; iron post stamped "1 5346" .....	5, 344. 849
Goldfield, 8.7 miles north of, in forks of road, on north bank of deep ravine, 500 feet north of old well in bottom of ravine; iron post stamped "2 5114" ..	5, 112. 883
Ramseys Well, 150 feet southwest of, at southeast corner of restaurant; iron post stamped "3 4995" .....	4, 994. 173
Ramseys Well, 3.5 miles north of, 30 feet west of road, on north side of deep ravine; iron post stamped "4 5187" .....	5, 186. 134
Ramseys Well, 5.5 miles north of, 0.2 mile south of forks of road to Klondike, 250 feet east of road, on west end of twin buttes; aluminum tablet stamped "5 5403" .....	5, 401. 613
Gold Mountain Mining Co.'s plant, 1.3 miles south of, 30 feet south of road, in middle of valley, 1 mile south of summit; iron post stamped "6 5754" ..	5, 753. 238

**WHITE MOUNTAIN QUADRANGLE.**

**Silver Peak road junction 4 miles south of The Crossing southwest via Fish Lake to McAfee ranch, thence southeast to State line.**

The Crossing, 4 miles south of, at Silver Peak road junction; top of iron post of guideboard .....	4, 738. 213
Fish Lake, opposite Stuart home, between road and shore of Fish Lake; iron post stamped "4865" .....	4, 790. 749

**Camp Mohave and Ivanpah 1° Quadrangles.**

**LINCOLN COUNTY.**

The elevations in the following list are based upon the preliminary 1911 adjustment of elevations at Las Vegas, Nev., and Barnwell, Cal., of the Coast and Geodetic Survey precise level line.

The leveling was done in 1909 by L. F. Biggs.

**IVANPAH 1° QUADRANGLE.**

**Point 5 miles west of Searchlight west along Atchison, Topeka & Santa Fe Railway to State line.**

Searchlight, 5.6 miles west of, in base of milepost 17; spike with aluminum tag stamped "3612" .....	Feet. 3, 609. 75
Searchlight, 6.6 miles west of, in base of milepost 16; spike with aluminum tag stamped "3735" .....	3, 733. 26
Searchlight, 7.6 miles west of, 5 feet west of milepost 15, north edge of railroad right of way; iron post stamped "3860 B 1909 16" .....	3, 858. 085

	Feet.
Searchlight, 8.6 miles west of, in base of milepost 14; spike with aluminum tag stamped "3965".....	3,962.97
Searchlight, 9.6 miles west of, in base of fourth telephone pole west of milepost 13; spike with aluminum tag stamped "4058".....	4,055.54
Searchlight, 10.6 miles west of, in base of milepost 12; spike with aluminum tag stamped "4146".....	4,144.06
Searchlight, 11 miles west of, north edge of railroad right of way, 50 feet east of Nevada-California State line post, in bed rock; aluminum tablet stamped "4199 B 1909 17".....	4,197.099

**Stump Springs south to Culver ranch, near State line.<sup>1</sup>**

Stump Springs, 4.7 miles southwest of, 100 feet north of junction of Stump Springs and Sandy roads; iron post stamped "2708 B 1909 54".....	2,705.850
Stump Springs, 7.2 miles southeast of, 20 feet west of road, at northwest point of clay-colored butte; iron post stamped "2848 B 1909 53".....	2,845.753
Culver ranch, 500 feet north of house, 15 feet west of road; iron post stamped "2684 B 1909 52".....	2,682.209

**CAMP MOHAVE 1° QUADRANGLE.**

**Point 15 miles southeast of Las Vegas along road south to Searchlight, thence southwest along Atchison, Topeka & Santa Fe Railway 5 miles to State line.**

Mesquite Spring, 6.4 miles south of, in road forks, at junction of Searchlight and Railroad Pass roads, in lava boulder buried flush with ground; aluminum tablet stamped "2049 B 1909 3".....	2,046.818
Mesquite Spring, 9.2 miles south of, east edge of road, on outcropping boulder; painted "2408" chisel point.....	2,405.83
Mesquite Spring, 10.7 miles south of, 50 feet east of road, on summit between Mesquite Spring and Dry Lake, in lava rock; aluminum tablet stamped "2617 B 1909 4".....	2,615.208
Dry Lake, 2.5 miles north of north edge of, east edge of road, at point of rocks, in ledge; chisel point; rock painted "2102".....	2,100.15
Dry Lake, north edge of, 100 feet east of forks of Eldorado Canyon and Searchlight road, 50 feet north of well, in lava boulder buried flush with ground; aluminum tablet stamped "1712 B 1909 5".....	1,709.416
Dry Lake, south edge of, 40 feet south of road, in granite boulder buried flush with ground; copper bolt stamped "U.S.G.S.B.M.1711 6".....	1,709.224
Dry Lake, 5.2 miles south of, 30 feet south of road, in granite boulder 6 inches above ground; aluminum tablet stamped "2038 B 1909 7".....	2,037.859
Dry Lake, 9 miles south of, 1,000 feet south of series of small washes, in bunch grass plot 25 feet east of road, in boulder, 6 inches above ground; aluminum tablet stamped "2348 B 1909 8".....	2,345.715
Dry Lake, 11.6 miles south of, 50 feet east of road, on west bank of wash, in boulder 12 inches above ground; aluminum tablet stamped "2735 B 1909 9".....	2,732.784
Dry Lake, 15.5 miles south of, 13.9 miles north of Searchlight, 15 feet east of road, in granite boulder 4 inches above ground; aluminum tablet stamped "2949 B 1909 10".....	2,946.777
Searchlight, 11.7 miles north of, east edge of road, in base of yucca tree; spike with aluminum tag stamped "3115".....	3,112.62
Searchlight, 10.7 miles north of, in forks of road, at junction of Nelson and Searchlight roads, in granite boulder 3 inches above ground; aluminum tablet stamped "3165 B 1909 11".....	3,163.234

<sup>1</sup> Part of a circuit from Barnwell in which an excessive error has been adjusted.

Searchlight, 7.2 miles north of, 20 feet west of road, at forks of wash, on north bank of wash, in boulder 6 inches above ground; aluminum tablet stamped "3400 B 1909 12".....	Feet. 3, 398. 091
Searchlight, 2.2 miles north of, 50 feet east of road, 1,000 feet east of Searchlight mine, in boulder; aluminum tablet stamped "3730 B 1909 13".....	3, 728. 479
Searchlight, 75 feet north of Atchison, Topeka & Santa Fe Railway station, 2 feet from telephone pole; iron post stamped "3445 B 1909 14".....	3, 443. 235
Searchlight, 0.5 mile west of, south edge of track, opposite milepost 22, in base of sign post; spike with aluminum tag stamped "3421".....	3, 419. 41
Searchlight, 1.6 miles west of, in base of milepost 21; spike with aluminum tag stamped "3405".....	3, 403. 49
Searchlight, 2.6 miles west of, in base of milepost 20; spike with aluminum tag stamped "3398".....	3, 395. 83
Searchlight, 3.6 miles west of, 100 feet west of milepost 19, north edge of railroad right of way; iron post stamped "3430 B 1909 15".....	3, 428. 460
Searchlight, 4.6 miles west of, in base of milepost 18; spike with aluminum tag stamped "3500".....	3, 498. 48

**Tonopah 1° Quadrangle.****ESMERALDA AND NYE COUNTIES.**

The elevations in the following list are based upon an elevation at Lida determined by a spur line of precise leveling of the Geological Survey from Mohave, Cal. The connection with Lida was obtained through primary leveling in the Lida and Silver Peak quadrangles.

Most of the leveling was done in 1907 and 1908 by T. A. Green; that near Tonopah was done in 1905 by Ress Philips and that near Columbus in 1897 by C. R. Smith.

**TONOPAH 1° QUADRANGLE.****Point near Gold Mountain Mining Co.'s plant north to Tonopah.**

Tonopah, 3 miles south of, at foot of hill, 20 feet south of road, 0.5 mile south of New England mine; iron post stamped "7".....	Feet. 5, 955. 236
Tonopah, 20 feet west of road, at corner of Boswell Street; iron post stamped "8".....	6, 154. 668
Tonopah, at entrance to Nye & Ormsby Co. bank; cross cut in curbstone (railroad elevation 6,085.785 feet).....	6, 031. 47
Tonopah, south side of Main Street, in southwest corner of Tonopah Banking Corporation building, at entrance to basement, in second stone above pavement; aluminum tablet stamped "9".....	6, 033. 178
<b>Tonopah west along wagon road to Montezuma Wells, thence north to San Antonio.</b>	
Tonopah, in front of station; top of rail.....	5, 982. 1
Tonopah, 5.8 miles west of, 30 feet south of road; iron post stamped "5337 1907".....	5, 337. 328
Tonopah, 11.9 miles west of, 0.7 mile east of Montezuma Wells, 30 feet north of road at junction with road running southeast toward railroad; iron post stamped "4845 1907".....	4, 844. 919
Montezuma Wells, 5.3 miles north of, 30 feet west of road; iron post stamped "4890 1907".....	4, 889. 973
Midway, on east side of road, at southwest corner of house occupied by Peter Samuelson; iron post stamped "5008 1907".....	5, 008. 202



Midway, 5 miles northeast of, east side of road; iron post stamped "5140 1907".....	Feet. 5, 140. 325
San Antonio, 0.6 mile west of, 20 feet south of road; iron post stamped "5384 1907".....	5, 384. 549
San Antonio, 40 feet southeast of corner of main building, in southeast corner of fence around house; iron post stamped "5406 1907".....	5, 406. 535

**San Antonio west via Cloverdale and Cipac mine to Battle's well.**

Cloverdale, 12 miles southeast of, 30 feet south of road; iron post stamped "5376 1907".....	5, 375. 954
Cloverdale, 6 miles southeast of, 30 feet south of road, 0.8 mile west of road running southeast to Tonopah; iron post stamped "5508 1907".....	5, 508. 241
Cloverdale, forks of road south of, in prong of forks forming Y; iron post stamped "5697 1907".....	5, 696. 903
Lower Black Spring, 3.2 miles east of, 3.8 miles west of Cloverdale, 30 feet north of road; iron post stamped "5439 1907".....	5, 439. 572
Cipac mine, 4 miles southwest of, 10 feet south of road; iron post stamped "5773 1907".....	5, 772. 880
Cipac mine, 9.2 miles west of, 30 feet south of road, 120 feet west of forks, in large outcrop of limestone rock; aluminum tablet stamped "6672 1907".....	6, 672. 728
Cipac mine, 15.2 miles west of, 10 feet north of road, on little hill between two drains; iron post stamped "6246 1907".....	6, 246. 325
Battle's Well, 783 feet east of, 590 feet west of main forks, 25 feet south of road, in large oblong boulder; aluminum tablet stamped "6240 1907".....	6, 240. 246

**San Antonio northeast along wagon road to point 3 miles west of Central.**

San Antonio, 6 miles northeast of, on east side of road; iron post stamped "5887 1907".....	5, 887. 264
San Antonio, 10 miles northeast of, 2 miles west of Central, at forks of road, 30 feet north of junction; iron post stamped "6226 1907".....	6, 225. 980

**Point near Central east to Manhattan and return.**

Manhattan, west end of town, on south side of road, 115 feet east of cabin occupied by E. E. Teberg; iron post stamped "6905 1907".....	6, 904. 950
Manhattan, southeast corner of barber shop managed by Bruce Wood; iron post stamped "7021 1907".....	7, 021. 205

**Point near Central north along wagon road to Ophir Canyon, thence west over Ophir Summit to Keough ranch, thence southwest via Union Canyon and Berlin to Goldyke, thence south and southeast to point near Cloverdale.**

Central, 7.6 miles northwest of, 20 feet east of road; iron post stamped "5742 1907".....	5, 741. 915
Central, 13.8 miles northwest of, 20 feet east of road, 40 feet south of four corners; iron post stamped "5801 1907".....	5, 801. 766
Wood's ranch, 200 feet northwest of ranch house, on east side of road; iron post stamped "5640 1907".....	5, 639. 813
Darroughs Hot Springs, 400 feet west of house occupied by James Darrough, east side of road, in southwest corner of fence at mail box; iron post stamped "5609 1907".....	5, 609. 186
Hot Springs, 6 miles northwest of, on west side of road, 10 feet south of second-class crossroads, in rock; aluminum tablet stamped "5830 1907".....	5, 830. 145

	Feet.
Ophir Canyon, mouth of, north side of trail, 200 feet south of stream, in large flat granite rock 4 feet long and 5 feet wide; aluminum tablet stamped "6282 1907".....	6, 282. 059
Ophir Summit, 15 feet south of trail, on east side of divide, 35 feet north of large pile of rock; aluminum tablet stamped "10115 1907".....	10, 115. 498
Gooding's ranch, 600 feet north of house occupied by George Gooding, north side of wagon road; iron post stamped "7430 1907".....	7, 430. 423
Keough's ranch, southwest corner of fence around house occupied by George Keough; iron post stamped "6726 1907".....	6, 726. 637
Keough's ranch, 6 miles southwest of, summit at head of Union Canyon, 50 feet north of wagon road, 75 feet northeast of divide, in rock; aluminum tablet stamped "7976 1907".....	7, 976. 433
Union Canyon, at forks near mouth of, 40 feet north of junction, in rock; aluminum tablet stamped "6763 1907".....	6, 763. 445
Berlin, 20 feet east of southwest corner of post office and The Nevada Co.'s store, on south side; iron post stamped "6683 1907".....	6, 683. 496
Berlin, 5.8 miles southwest of, 10 feet north of road; iron post stamped "6131 1907".....	6, 131. 525
Berlin, 12 miles southwest of, on north side of road, on east side of draw, 50 feet north of where road starts down into draw; iron post stamped "6119 1907".....	6, 119. 602
Berlin, 17.9 miles southwest of, 20 feet south of road, on west side of small draw; iron post stamped "6469 1907".....	6, 469. 433
Goldyke, north side of store kept by W. Dee Jones, 20 feet west of northeast corner; iron post stamped "5886 1907".....	5, 886. 473
Pactolus, 0.4 mile north of, forks at signboard reading "Sodaville 35 miles," 30 feet east of junction; iron post stamped "5796 1907".....	5, 795. 990
Pactolus, 5.7 miles southeast of, 25 feet west of road; iron post stamped "5930 1907".....	5, 930. 324
Black Springs, on west side of road at upper spring, in southeast corner of pasture fence; iron post stamped "5570 1907".....	5, 570. 524

**Redlich south to Columbus.**

Redlich, 90 feet east of tracks, 300 feet north of milepost 7, 100 feet south of section house and post office, in rock embedded in ground; aluminum tablet stamped "4999 1907".....	5, 000. 196
Redlich, 5.1 miles south of, at junction with road running northwest, at signboard reading "Sodaville 17 miles," 40 feet east of road; iron post stamped "4828 1907".....	4, 828. 586

**Columbus southeast across Salt Marsh.**

Coaldale, 1 mile southwest of, 1 mile east of Columbus Salt Marsh, west of road near crossroads; iron post stamped "4671" (old railroad datum)....	4, 595. 812
--	-------------

**Goldyke northwest to point 2 miles west of Kelly's Well.**

Goldyke, 2.4 miles northwest of, 0.6 mile east of Everett's mine, 20 feet north of road, 100 feet west of road running south, at prospect hole, in rock; aluminum tablet stamped "5780".....	5, 780. 218
Kelly's Well, 3.5 miles southeast of, 75 feet west of road, at point projecting west between two drains, in porphyry outcrop; aluminum tablet stamped "5258".....	5, 258. 505
Kelly's Well, southeast corner of windmill, in plank; nail marked "4577".....	4, 577. 45

## Bridgeport 30' and Hawthorne 1° Quadrangles.

## ESMERALDA COUNTY.

The elevations in the following list are based upon a bench mark at Bridgeport, Cal. The elevation used is 4 feet greater than that given in Bulletin 342, this correction being determined by leveling through Hawthorne, Nev., from Mohave, Cal. Allowance has been made for orthometric correction from Mohave, and a small correction has been applied at Mohave.

The leveling was done by C. M. Weston in 1909.

## BRIDGEPORT 30' QUADRANGLE.

Point on State line at Bridgeport-Sweetwater stage road east to junction of East Walker River and Bodie Creek.

	Feet.
Bridgeport, 13.7 miles northeast of, on California-Nevada State line, survey of 1873, 25 feet west of road; iron post stamped "5956".....	5,954.665
Bridgeport, 15 miles northeast of, 700 feet north of Fulsome-Frederick's ranch, in field, 30 feet east of road, on boulder; chiseled square painted "5895".....	5,893.33
Sweetwater, 5 miles southeast of, at P. J. Conway's ranch, 30 feet northwest of northwest corner of house, at corner of fence; iron post stamped "5821".....	5,819.581
Fletcher, 16.6 miles northwest of, on iron bridge over East Walker River, at southeast corner; seventh outside bolt from bottom of east girder; painted white; marked "5773".....	5,771.87
Fletcher, 15.2 miles northwest of, 30 feet west of sharp bend in road at west end of cut-off, 5 feet south of and 3 feet above road, on ledge; chiseled square painted "5826".....	5,824.77
Fletcher, 14.4 miles northwest of, at summit in road, west of The Elbow, 15 feet south of road; iron post stamped "5891".....	5,889.434
Fletcher, 13.6 miles northwest of, on east side of road, 75 feet east of deep draw and 125 feet south of bend in road, 10 feet from center of road, on 3-foot boulder; chiseled square painted "5852".....	5,850.35
Fletcher, 12.9 miles northwest of, on steep grade west of The Elbow, at ditch crossing, 8 feet north of road, on boulder; chiseled square painted "5842".....	5,840.35
The Elbow, teaming station, 3 feet from southwest corner of John Cump-ton's house; iron post stamped "5631".....	5,629.595
Fletcher, 10 miles northwest of, at Wheeler's ranch, junction of Bodie Creek and East Walker River, 35 feet south of southwest corner of house; iron post stamped "5585".....	5,583.704

## HAWTHORNE 1° QUADRANGLE.

Hawthorne west along stage road to State line.

Hawthorne, 25 feet north of front entrance to old Esmeralda County courthouse, in northeast corner on east side; aluminum tablet stamped "4326 1907."	
Original elevation before applying orthometric correction.....	4,327.084
Elevation after applying orthometric correction.....	4,325.609
Hawthorne, 0.5 mile west of, near telephone line from Hawthorne to county hospital, 50 feet east of pole nearest small building north of line, on small boulder; chiseled square painted "4394 O".....	4,392.19

	Feet.
Hawthorne, 1.6 miles west of, 35 feet southeast of southeast corner of yard around county hospital, on granite boulder, 9 inches above ground; chiseled circle painted "4591 O" .....	4, 589. 58
Hawthorne, 1.9 miles west of, 7 feet inside of east corner of fence around water tanks; iron post stamped "4643" .....	4, 641. 461
Hawthorne, 2.7 miles west of, 200 feet east of turn to Cory, 30 feet south of road, on rock; chiseled square painted "4800 O" .....	4, 798. 49
Hawthorne, 4.7 miles west of, on south side of north road to Lucky Boy, 10 feet from center of road, at foot of slope, on boulder; chiseled square painted "5302 O" .....	5, 300. 86
Hawthorne, 6.5 miles west of, 85 feet east of road, on point on ridge below which main road passes three times, 3 feet east of claim corner and 3 feet southwest of scrub pine; point on ledge painted "O"; stake painted "6027" .....	6, 025. 75
Hawthorne, 7 miles west of, in lower part of town of Lucky Boy, about 200 feet south of mine shaft, 12 feet above and on south side of main road, on point of ledge; aluminum tablet stamped "6226" .....	6, 224. 542
Hawthorne, 7.7 miles west of, 12 feet north of northeast corner of Lucky Boy reservoir; iron post stamped "6606" .....	6, 604. 698
Hawthorne, 8.6 miles west of, 20 feet south of short cut on main road, 8 feet higher than road; point on boulder painted "6849 W" .....	6, 847. 07
Hawthorne, 10.8 miles west of, 25 feet west of spout under road in first dry channel east of Summit stage station, on boulder in ditch; chiseled square painted "7362 O" .....	7, 360. 68
Hawthorne, 11.4 miles west of, at Summit stage station, at southwest corner of house; iron post stamped "7511" .....	7, 509. 623
Hawthorne, 12.6 miles west of, 1.2 miles west of Summit stage station, 12 feet south of road, and 17 feet north of telephone pole, on large granite boulder, 3 feet above ground; chiseled circle painted "7732 W" .....	7, 730. 47
Hawthorne, 13.5 miles west of, 2.1 miles west of Summit stage station, south of road at summit, in base of telephone pole; spike painted "8008 O" .....	8, 006. 52
Hawthorne, 16.2 miles southwest of, at turn from Hawthorne-Bodie stage road to Yerington, 3 feet southeast of guide post and 15 feet from either of Y roads; iron post stamped "7145" .....	7, 143. 675
Fletcher, 3.9 miles east of, in Mud Spring Canyon, at foot of point of ridge on north side, 175 feet north of dry wash and 25 feet north of road; iron post stamped "6396" .....	6, 394. 682
Fletcher, on south side of road and about 75 feet northeast of northeast corner of house, just north of large spring; iron post stamped "6100" ..	6, 098. 348
Fletcher, 2.1 miles southwest of, 30 feet west of Bodie Creek, on south side of road, on boulder; chiseled square painted "6222" .....	6, 221. 07
Fletcher, 3.4 miles southwest of, 150 feet east of old toll house, 50 feet north of Bodie Creek, and 25 feet south of road, on large boulder; chiseled square painted "6447" .....	6, 445. 84
Fletcher, 4.3 miles southwest of, in Bodie Creek Canyon, on south side of road, at top of 4-foot boulder; chiseled square painted "6652" .....	6, 650. 24
Fletcher, 5.5 miles southwest of, at Del Monte stage station, at northwest corner of platform to old store; iron post stamped "6922" .....	6, 920. 603
Fletcher, 6.7 miles southwest of, in Bodie Creek Canyon, on north side of road, on boulder; chiseled square painted "7157" .....	7, 156. 12
Fletcher, 7.8 miles southwest of, in Bodie Creek Canyon, on north side of road, at foot of steeper grade, on boulder; chiseled square painted "7422" .....	7, 420. 37

Fletcher, 8.1 miles southwest of, on California-Nevada State line, survey of 1873, 25 feet south of milepost 283, 300 feet east of old stone house at Sunshine, 15 feet north of road; iron post stamped "7524"..... 7,522.624 Feet.

**Del Monte to Aurora (spur line).**

Aurora, 0.9 mile northwest of, 10 feet west of road, opposite 10-foot cut, on 3-foot boulder; chiseled square painted "7246"..... 7,245.36  
Aurora, at southeast corner of post office; iron post stamped "7416"..... 7,414.734

**Junction of East Walker River and Bodie Creek southeast to Fletcher.**

Fletcher, 8.7 miles northwest of, on Bodie Creek, 1.3 miles upstream from Wheeler's ranch, at west end of creek, on 4-foot boulder; painted "5660" . 5,658.40  
Fletcher, 7.7 miles northwest of, on Bodie Creek, 2.3 miles upstream from Wheeler's ranch, on south edge of creek and 20 feet west of 10-foot boulder, on 6-foot boulder; chiseled square painted "5728"..... 5,726.22  
Fletcher, 5.7 miles northwest of, about 500 feet southwest of Bodie Creek and 250 feet east of foot of ridge, 20 feet west of dry channel, on boulder; chiseled square painted "5843"..... 5,841.86  
Fletcher, 4.8 miles northwest of, in pasture owned by G. A. Green, 100 feet west of high bank at sharp bend in Bodie Creek and 300 feet south of point where fence crosses south bank of creek, 3 feet east of wire fence; iron post stamped "5863"..... 5,861.383  
Fletcher, 3.2 miles northwest of, at G. A. Green's ranch, 7 feet south of front gate to front yard and 35 feet east of southeast corner of house; iron post stamped "5948"..... 5,946.546

NOTE.—For additional elevations in the Hawthorne quadrangle see following list.

**Carson Sink and Hawthorne 1° Quadrangles.**

**ESMERALDA, CHURCHILL, AND NYE COUNTIES.**

The elevations in the following list are based upon a bench mark established at Lida by precise leveling, connection with which was obtained through primary leveling in the Lida, Silver Peak, and Tonopah quadrangles.

The leveling was done in 1907 and 1908 by T. A. Green, with the exception of that near Candelaria in the Hawthorne quadrangle, which was done in 1897 by C. R. Smith. The leveling by Smith was based on railroad datum; the bench marks are stamped 75 feet too high.

**HAWTHORNE 1° QUADRANGLE.**

**Candelaria southeast to Columbus.**

	Feet.
Candelaria, in brickwork of front of post office; bronze tablet.....	5,666.568
Candelaria, 2 miles south of, at Sodaville crossroads; top of iron post of guideboard.....	5,321.00
Candelaria, 5.75 miles south of, in quartz outcropping on right side of road at summit; bronze tablet stamped "5394".....	5,319.249
Columbus, 2 feet west of southwest corner of E. Moleno's saloon; iron post stamped "4625".....	4,550.200

**Battle's Well west to Mina.**

Battle's Well, 5.95 miles west of, 10 feet south of road, in large limestone boulder; aluminum tablet stamped "5040 1907"..... 5,040.097

**Redlich north and west along Southern Pacific Railroad via Mina to Hawthorne.**

	Feet.
Tonopah Junction, 2.96 miles southeast of, 70 feet east of tracks, 10 feet north of milepost 3; iron post stamped "4584 1907".....	4,584.623
Tonopah Junction, intersection of Southern Pacific Railroad and Tonopah & Goldfield Railroad; top of rail.....	4,410.9
Rhodes, in front of station signboard; top of rail.....	4,383.8
Sodaville, 2.43 miles south of, 40 feet west of railroad, 90 feet south of road crossing, 566 feet north of milepost 135; iron post stamped "4438 1907" ..	4,438.962
Sodaville, in front of station; top of rail (railroad elevation, 4,675 feet)....	4,589.6
Mina, in front of station; top of rail.....	4,552.00
Mina, west of railroad, in southwest corner of parking, near fence on north side of Southern Pacific Railroad station; iron post stamped "4553 1907" ..	4,553.444
Mina, 6.01 miles north of, 40 feet west of tracks, 3 feet south of milepost 123; iron post stamped "4464 1907".....	4,464.723
Luning, in front of station; top of rail.....	4,469.8
Luning, 3.17 miles northwest of, 50 feet south of tracks, 6 feet south of milepost 117; iron post stamped "4561 1907".....	4,561.174
Acme siding, in front of signboard; top of rail.....	4,438.5
Luning, 9.15 miles northwest of, 40 feet south of tracks, 5 feet south of milepost 111; iron post stamped "4399 1907".....	4,399.376
Luning, 15.14 miles northwest of, 40 feet south of tracks, 6 feet south of milepost 105; iron post stamped "4478 1907" .....	4,478.975
Luning, 20.89 miles northwest of, 4.4 miles east of Hawthorne, 70 feet south of old railroad crossing, 10 feet south of wagon road, at forks of road; iron post stamped "4349 1907".....	4,349.430
Hawthorne, at northwest corner of old railroad freight station, now occupied by D. W. Earl & Co. as a warehouse; iron post stamped "4334 1907" ..	4,334.457

**Hawthorne along Southern Pacific Railroad to Schurz, thence along stage road east toward Rawhide.**

Hawthorne, 5.03 miles north of, 10 feet north of wagon road; iron post stamped "4133".....	4,133.335
Thorne, in front of station; top of rail.....	4,206.6
Thorne, 4.31 miles north of, 50 feet east of railroad, 75 feet east of milepost 92; iron post stamped "4117".....	4,117.125
Walker, in front of signboard; top of rail.....	4,116.1
Walker, 1.57 miles north of, 15 feet west of milepost 87; iron post stamped "4114".....	4,113.697
Walker, 6.59 miles north of, 40 feet east of railroad, 70 feet east of milepost 82; iron post stamped "4163".....	4,162.656
Gillis, in front of station; top of rail.....	4,176.7
Walker Lake; surface of water, September 27, 1908.....	4,084.96
Gillis, 2.41 miles north of, 50 feet west of tracks, 10 feet west of milepost 77; iron post stamped "4176".....	4,175.775
Modoc, in front of station; top of rail.....	4,116.86
Modoc, 1.39 miles north of, 50 feet west of railroad, 15 feet west of milepost 72; iron post stamped "4113".....	4,113.434
Schurz, in front of station; top of rail (railroad elevation 4,123.45 feet)...	4,129.5
Schurz, 200 feet west of station, 60 feet south of railroad, at northeast corner of Nevada Mercantile & Supply Co.'s store; iron post stamped "4130" ..	4,129.723
Schurz, 4.96 miles east of, 25 feet south of road; iron post stamped "4159" ..	4,158.872
Schurz, 10.01 miles east of, 15 feet east of road, at north end of alkali flat; iron post stamped "4057".....	4,057.350

**Rawhide to point 1.8 miles west of Kelly's Well.**

Rawhide, 5.02 miles southeast of, 30 feet south of road; iron post stamped "4300" .....	Feet. 4, 300. 096
Murphy's Well, 4.08 miles east of, 30 feet south of road, at dry lake; iron post stamped "4109" .....	4, 109. 428
Hot Springs, 30 feet east of spring, in depression in ground; iron post stamped "4131" .....	4, 131. 490
Warner's Well, in east end of casing around well; top of iron bolt marked "4260" .....	4, 260. 10
Warner's Well, 1.0 mile east of, 40 feet south of road; iron post stamped "4263" .....	4, 263. 565
Warner's Well, 6.04 miles east of, 30 feet south of road; iron post stamped "4366" .....	4, 365. 866
Warner's Well, 11.07 miles east of, 20 feet south of road; iron post stamped "4577" .....	4, 576. 744

**Schurz north toward Stinking Spring.**

Schurz, 300 feet northwest of slaughterhouse, 20 feet south of road; iron post stamped "4130" .....	4, 129. 965
---	-------------

NOTE.—For additional elevations in the Hawthorne quadrangle see preceding list.

**CARSON SINK QUADRANGLE.****Point 10.0 miles east of Schurz to Rawhide.**

Schurz, 10.0 miles east and 4.69 miles north of, at summit, 10 feet west of road, in center of divide; iron post stamped "4624" .....	4, 624. 188
Rawhide, 10 miles northwest of, 8.25 miles west of Fallon-Rawhide road, 15 feet east of road, on west side of brown rocky butte about 100 feet high; iron post stamped "4453" .....	4, 452. 918
Rawhide, 5 miles northwest of, 3.15 miles west of Fallon-Rawhide road, 20 feet west of road, on west side of sandy wash; iron post stamped "4921" .....	4, 921. 273
Rawhide, 1.03 miles north of, 400 feet south of divide, 90 feet east of road, in base of square post marked "Angle Corner-Scalded Cat 1 and 2"; spike marked "5276" .....	5, 275. 92
Rawhide, at southeast corner of Physicians' & Surgeon's Hospital, on south side; iron post stamped "5152" .....	5, 152. 252

**Point near Eagleville north via Bermond stage station and Mountain Well to Still-water.**

Monte Cristo, 3.38 miles north of, 5 feet north of road, at point where road makes sharp bend to northwest, in large granite boulder; aluminum tablet stamped "4936" .....	4, 936. 195
Eagleville, 3.03 miles north of, 10 feet east of road; iron post stamped "5370" .....	5, 370. 138
Eagleville, 8.08 miles north of, 30 feet east of road, on east side of wash, in oblong rock; aluminum tablet stamped "4710" .....	4, 710. 493
Bermond, 7.55 miles south of, at junction with road running southwest to Frenchman's Spring, 30 feet west of forks, 50 feet northwest of signboard reading "Green Springs"; in rock; aluminum tablet stamped "4397" ..	4, 396. 891
Bermond, 2.46 miles south of, 20 feet west of road, on old dry lake bed; iron post stamped "4155" .....	4, 154. 958
Bermond, stage station, in northwest corner of cistern; top of rail, marked "4163" .....	4, 162. 793

	Feet.
Bermond, 2.55 miles northwest of, 30 feet east of road; iron post stamped "4249".....	4, 249. 374
Bermond, 7.64 miles northwest of, 40 feet east of road, in large oblong boulder; aluminum tablet stamped "4611".....	4, 610. 799
Mountain Well, 2.98 miles southeast of, 50 feet east of road, 25 feet west of wash, 300 feet south of point where road parts to go up wash and over hill, in limestone rock; aluminum tablet stamped "5312".....	5, 311. 991
Mountain Well, 2.04 miles west of, 40 feet north of road, on south side of wash, in large brown boulder 4 feet by 3 feet by 3 feet; aluminum tablet stamped "5051".....	5, 050. 777
Stillwater, 6.85 miles east of, on west side of road, in large black boulder; aluminum tablet stamped "4341".....	4, 341. 109
Stillwater, 1.69 miles east of, at junction with road running northeast, at signboard reading "Lovelock 65 miles—Wonder 40 miles," 5 feet south of signboard; iron post stamped "3906".....	3, 906. 513
Stillwater, in southeast corner of hotel kept by Charles P. Cirac, on east side; aluminum tablet stamped "3912".....	3, 911. 812
Stillwater, Cirac's hotel, at front entry; top of stone doorsill.....	3, 909. 51
<b>Stillwater west toward Fallon (double spur line).<sup>1</sup></b>	
Stillwater, 1.66 miles west of, 1,000 feet west of Dalton's house, 40 feet north of road, 50 feet west of second-class road running north; iron post stamped "3904.755—Feb. 20, 1908" (Reclamation Service elevation 3904.755 feet).	3, 908. 290
Stillwater, 2.66 miles southwest of, 40 feet west of road; point on top of wooden hub driven in ground; marked "3909.28" (Reclamation Service elevation 3909.28 feet).....	3, 913. 07
Stillwater, 3.77 miles southwest of, 100 feet north of road; point on top of wooden hub driven in ground; marked "3911.96" (Reclamation Service elevation 3911.96 feet).....	3, 915. 59
Stillwater, 6.59 miles southwest of, 40 feet north of road, 40 feet south of house; iron post stamped "3921.6 datum S. P." (Reclamation Service elevation 3921.6 feet).....	3, 925. 181
<b>Point near Schurz northeast via Allen Spring, Junction, and Salt Well to Stillwater.</b>	
Schurz, 5.6 miles northeast of, 10 feet north of road; iron post stamped "4340".....	4, 340. 513
Schurz, 10.58 miles northeast of, at top of divide, 10 feet east of road; iron post stamped "4798".....	4, 797. 874
Allen Spring, 5.05 miles south of, at junction with road running northeast, 30 feet east of forks, in black rock; aluminum tablet stamped "4134"....	4, 133. 908
Allen Spring, at forks of road, 30 feet west of road junction; iron post stamped "4017".....	4, 016. 662
Allen Spring, 5.79 miles northeast of, 30 feet west of road, 250 feet south of point where road goes up to rim of old lake; iron post stamped "3936"....	3, 935. 974
Junction, 5 miles south of, about 2 miles west of main road to Schurz, 15 feet east of road; iron post stamped "3916".....	3, 915. 693
Junction, in center of forks of road, 5 feet west of signboard reading "Regent 26 miles"; iron post stamped "3937".....	3, 937. 277
Salt Well, at northeast corner of Petersen's road house; iron post stamped "3964".....	3, 964. 345
Stillwater, 10.12 miles south of, 30 feet east of road; iron post stamped "4038".....	4, 037. 834
Stillwater, 5.1 miles south of, 30 feet west of road, about 0.25 mile north of where road joins sandy road running north to Stillwater; iron post stamped "3953".....	3, 953. 435

<sup>1</sup> Bench marks set by the United States Reclamation Service.



**Bermond stage-station east and north to IXL Canyon, thence west to Cox Canyon and south to Stillwater.**

	Feet.
Fairview, 1 mile north of, at forks of road, 30 feet southeast of road junction; iron post stamped "4431".....	4,430.753
Fairview, 5.37 miles northeast of, at junction of roads running northeast to Wonder, northwest to IXL, and southwest to Bermond, 30 feet southeast of four corners; iron post stamped "4250".....	4,250.315
Fairview, 10.24 miles north of, at junction with road running southwest to Mountain Well Road, 10 feet east of road junction; iron post stamped "4091".....	4,091.495
IXL Canyon signboard, 13.05 miles south of, 10 feet east of road, 800 feet north of dim road running east; iron post stamped "3902".....	3,901.929
IXL Canyon signboard, 7.95 miles south of, 25 feet east of road, 200 feet south of dim road running northeast; iron post stamped "3756".....	3,756.553
IXL Canyon signboard, 2.87 miles south of, 10 feet east of road; iron post stamped "3591".....	3,591.360
IXL Canyon signboard, at forks of road, 50 feet south of, on west side of road, in granite rock; chiseled hole; rock marked "3532".....	3,531.75
IXL Canyon signboard, 2.1 miles west of, 30 feet north of road, 300 feet east of mouth of canyon, in large flat granite boulder; aluminum tablet stamped "4023".....	4,023.310
IXL Canyon and Cox Canyon, summit at head of, 125 feet north of trail, on top of divide, in limestone rock; aluminum tablet stamped "6873".....	6,873.031
Cox Canyon, 600 feet west of Wilson's and Kelker's houses, 40 feet south of road, in large limestone boulder; aluminum tablet stamped "5288".....	5,288.523
Cox Canyon, at forks of Stillwater-Shady Run road, 5 feet north of signboard, at northwest angle of forks; iron post stamped "3978".....	3,977.839
Desert Well, 70 feet southwest of, on west side of road, iron post stamped "3939".....	3,939.412
Desert Well, 5.03 miles southwest of, 60 feet west of road; iron post stamped "3893".....	3,893.553
Stillwater, 3.67 miles northeast of, 50 feet southeast of crossroads; iron post stamped "3897.9 S. P." (Reclamation Service bench mark).....	3,901.180

**Ely Special Quadrangle.****WHITE PINE COUNTY.**

The elevations in the following list are based on a bench mark of the Nevada Northern Railroad, near Ely.

The leveling was done in 1906 by Fred McLaughlin.

**Ely to Lane City.**

	Feet
Ely, in northeast corner of foundation of courthouse; aluminum tablet stamped "6421".....	6,420.749
Ely, 3 miles west of, 300 feet north of Watsons Spring and 150 feet north of Siliman's house, in large rock; aluminum tablet stamped "6596".....	6,595.845
Lane City, in base of flagpole; spike.....	6,553.808

**Lane City to point 1 mile south of Copper Flat.**

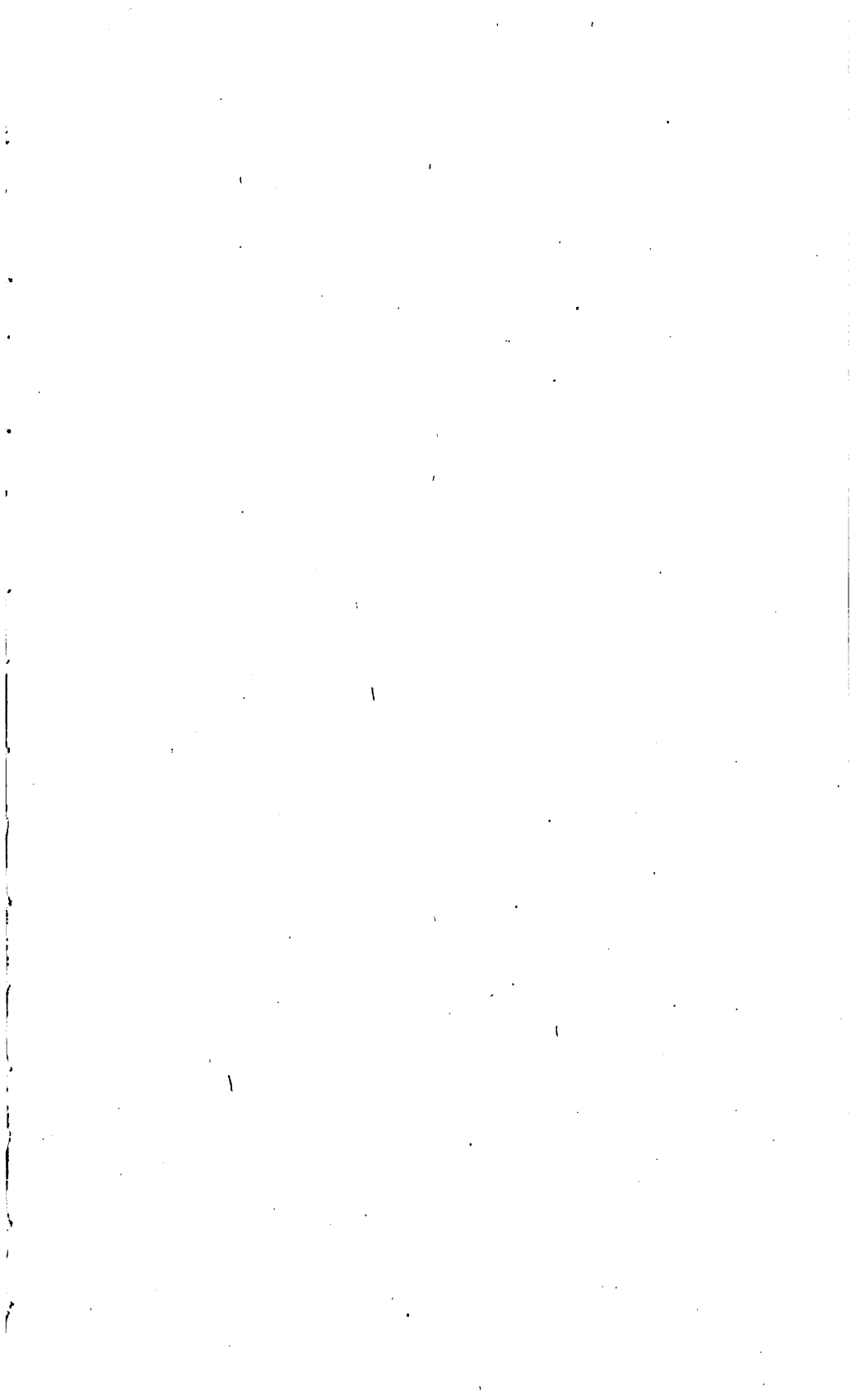
Ely, 6 miles west of, 30 feet west of road, in granite rock; aluminum tablet stamped "6766".....	6,765.762
Copper Flat, 1 mile southeast of, 15 feet east of Pittsburg claim post, in granite rock north of road forks; aluminum tablet stamped "7169".....	7,169.063

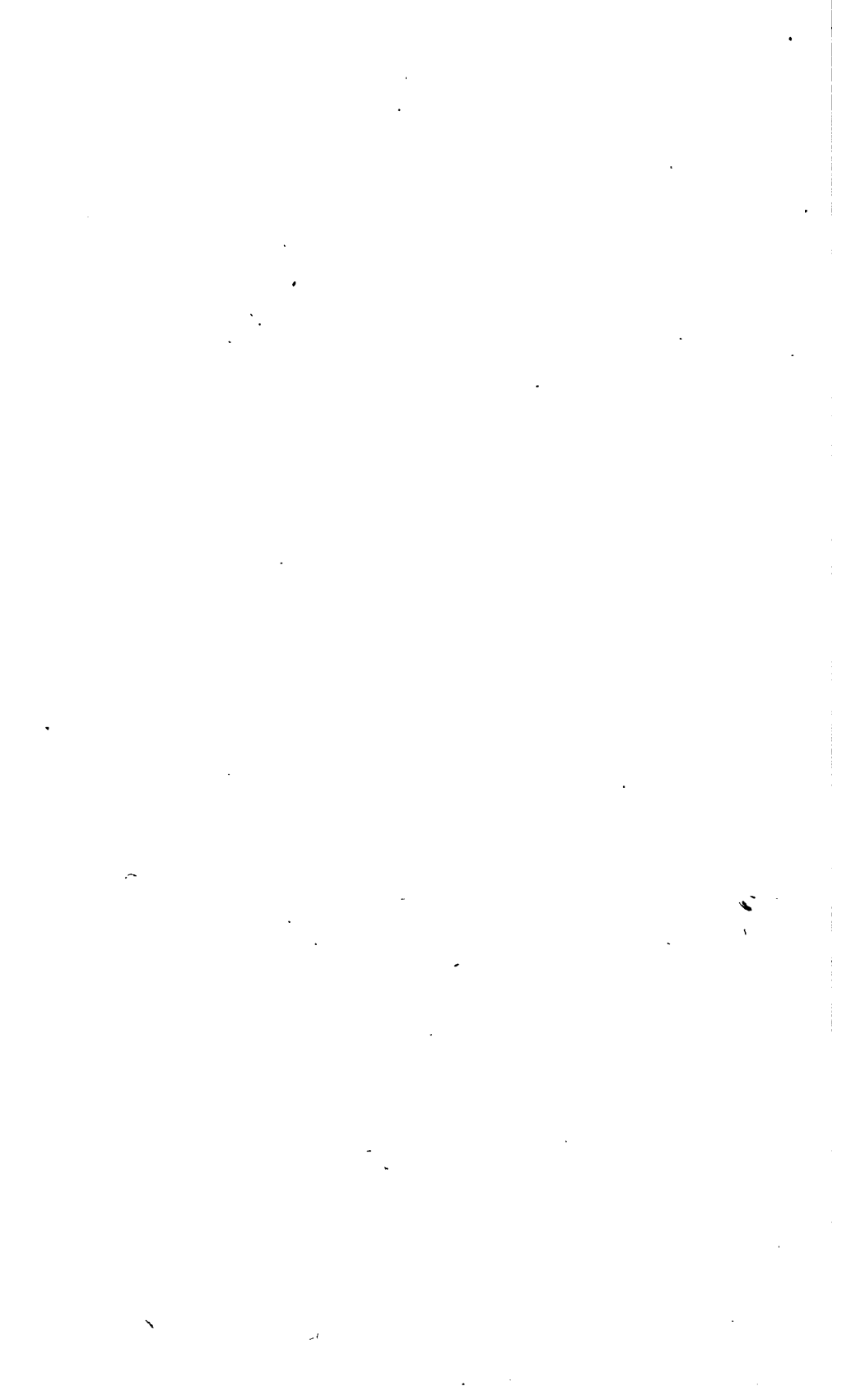
## INDEX.

A.		Page.	
Acme.....	23	Fairview.....	26
Allen Spring.....	25	Farmer, R. A., work of.....	7
Amargosa.....	9, 10, 11	Fish Lake.....	15
Arden.....	9	Fletcher.....	20, 21, 22
Atchison, Topeka & Santa Fe Ry.....	15-17	Furnace Creek quadrangle.....	10-12
Aurora.....	22	G.	
B.		Gannett, S. S., work of.....	5
Baldwin, D. H., work of.....	5	Gap Springs.....	12
Barrel Springs.....	12	Gerdine, T. G., work of.....	5
Battle's Well.....	18, 22	Gillis.....	23
Beatty.....	12	Goldbar.....	12
Bench marks.....	6	Goldfield.....	14, 15
plate showing.....	5	Goldyke.....	19
Benders Pass.....	13	Goode, R. U., work of.....	5
Berlin.....	19	Green, T. A., work of.....	17, 22
Bermond.....	24-25	Greens Wells.....	14
Biggs, L. F., work of.....	8, 15	H.	
Big Smoky Valley.....	13	Hadley, Homer, work of.....	8
Black Springs.....	19	Halfway.....	14
Bridgeport.....	20	Hawthorne.....	20-21, 23
Bridgeport quadrangle.....	20	Hawthorne quadrangle.....	20-22, 22-24
Bullfrog.....	11	I.	
C.		Indian Springs.....	8, 9
Camp Mohave quadrangle.....	16-17	Ivanpah quadrangle.....	15-16
Candelaria.....	22	IXL Canyon.....	26
Carson Sink quadrangle.....	24-26	J.	
Cave Springs.....	12	Junction.....	25
Central.....	18	K.	
Churchill County.....	22	Kawich quadrangle.....	12
Cloverdale.....	18	Kellys Well.....	19
Coaldale.....	19	Kings Spring.....	10
Columbus.....	12, 22	L.	
Copper Flat.....	26	Lane City.....	26
Corn Creek.....	9	Las Vegas.....	9, 10
Cox Canyon.....	26	Las Vegas quadrangle.....	9-10
Coyote Spring.....	12	Las Vegas & Tonopah R. R.....	9
Currie Well.....	11	Lida.....	8, 13
D.		Lida quadrangle.....	7-8, 12-15
Darroughs Hot Springs.....	18	Lincoln County.....	8, 15
Desert Well.....	26	Luning.....	23
Diamondfield.....	14	M.	
Douglas, E. M., work of.....	5	McLaughlin, Fred, work of.....	26
Dry Lake.....	16	Manhattan.....	18
E.		Manse.....	10
Eagle City.....	13-14	Marshall, R. B., work of.....	5
Eagleville.....	24	Mesquite Spring.....	10, 16
Ely.....	26	Midway.....	17-18
Ely special quadrangle.....	26		
Esmeralda County.....	7, 8, 17, 20, 22		

	Page.		Page.
Mina.....	23	Sand Spring.....	13
Modoc.....	23	San Pedro, Los Angeles & Salt Lake R. R....	9-10
Montana.....	14	Schurz.....	23-24, 25
Monte Cristo.....	24	Searchlight.....	15-16, 17
Montezuma Wells.....	17	Seattle V. ell.....	12, 14
Mountain Spring.....	10	Silver Peak.....	12
Mountain Well.....	25	Silver Peak quadrangle.....	12-13
Mud Springs.....	11, 12	Smith, C. R., work of.....	8, 17, 22
Murphys Well.....	24	Sodaville.....	23
	N.	Southern Pacific R. R.....	23-24
Nye County.....	8, 17, 22	Stillwater.....	25, 26
	O.	Stump Springs.....	10, 16
Ophir Canyon.....	19	Summerville.....	14
Ophir Summit.....	19	Sweetwater.....	20
Original.....	11		T.
	P.	The Crossing.....	12, 13, 15
Pactolus.....	19	The Elbow.....	20
Pahrump.....	10	The Monocline.....	13
Palmetto.....	8	Thorne.....	23
Phillips, Ress, work of.....	8, 17	Tonopah.....	17
	R.	Tonopah Junction.....	23
Ramseys Well.....	15	Tonopah quadrangle.....	17-19
Rawhide.....	24	Topographic maps.....	7
Redlich.....	19	Tule Spring.....	13
Rhodes.....	23		W.
Rhyolite.....	12	Walker.....	23
Roses Wells.....	11	Walker Lake.....	23
	S.	Warners Well.....	24
Salt Well, Churchill County.....	25	Weston, C. M., work of.....	20
Salt Well, Esmeralda County.....	13	White Mountain quadrangle.....	15
San Antonio.....	18	White Pine County.....	26
		Wilson's Well.....	14









3 2044 055 595 045

U.S. Geological Survey

Bulletin 488

DATE DUE

BORROWER'S NAME

DATE DUE	BORROWER'S NAME

IN U.S.A.

